



COMPANY PROFILE | **GFP LAB**

The new face of Hotel automation

WHAT WE DO

We design innovative solutions of

- **ACCESS CONTROL**
- **ENERGY SAVING**
- **ROOM AUTOMATION**

for the Hospitality market.

Our mission is to **make technology easy and elegant**
providing **the best user experience and comfort.**

WHO WE ARE



We are pioneers of the Hotel automation:

- **20 years** of **experience** in the market
- products are **100% made in Italy**
- **>5000 rooms all over the world**

Our values are:

- **Passion**
- **Innovation**
- **Respect of nature and people.**



OUR PRODUCTS

FLUSH MOUNT

- classic solution
- wall box installation
- **many embedded I/Os**



SENSEDOOR™

- door frame installation
- **2-in-1 (access control & energy saving)**
- customizable RGB colors
- **EnOcean compatible**



OUR PRODUCTS



MIRROR™

- top-level solution
- wall installation
- **all-in-1** (access control + energy saving + climate control + bed-side panel)
- TFT color touch display + built-in speaker
- custom logo and welcome message
- customizable RGB colors
- wireless (**WiFi + Bluetooth**)

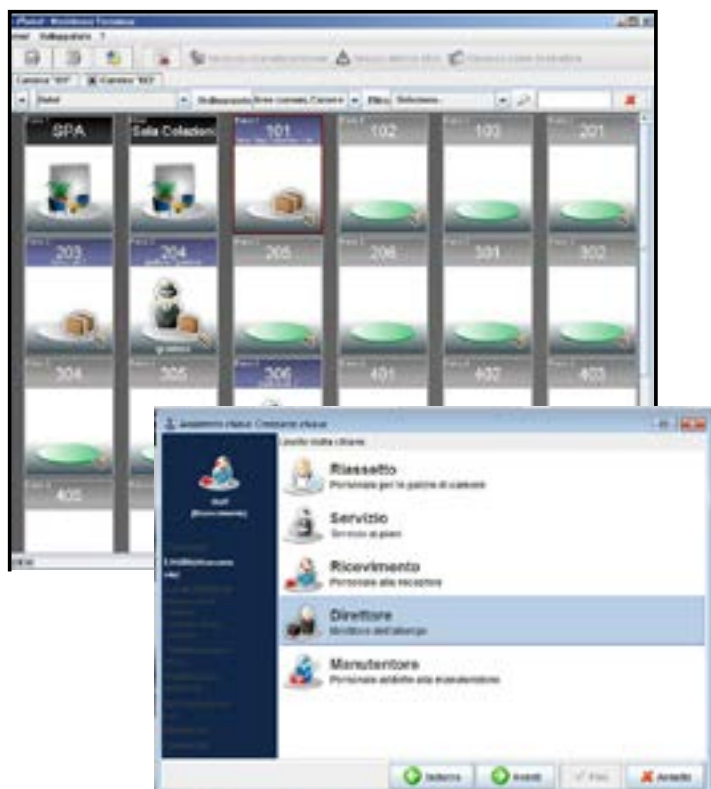
OUR SOFTWARE

GIANO™

- **very intuitive supervisor**
- modular, client-server and multi-user
- compatible with **Windows, Mac and Linux**
- already available in **7 languages**

GIANO can be integrated with

- **air conditioning systems** (daikin, mitsubishi,...)
- **PMSs** (fidelio, protel...)
- electric locks
- payment systems



WHY GFP LAB



- modular, scalable and **retrofit-ready** solutions
- **100% made in Italy**
- uncomparable system features:
 - wired or **wireless communication**
 - **works in case of power or communication failure**
 - **Mac compatible**
 - **SMS access** for Guest and staff
- efficient **online & real-time support**



WHAT CAN WE DO FOR YOU

We are looking for technical and commercial partners worldwide to **establish a strong and durable relationships.**

Our partners are mainly **architects/designers, system integrators** and **door manufacturers.**

With our help and know-how you will:

- better understand and **fulfill your customers needs**
- offer the **most competitive and elegant solutions**
- make **your market more profitable.**

Are you ready to work with us?

WHAT CAN WE DO FOR YOU

We are always looking for technical and commercial partners worldwide to **establish a strong and durable relationships.**

Our partners are mainly **architects/designers, system integrators** and **door manufacturers.**

With our help and know-how you will:

- better understand and **fulfill your customers needs**
- offer the **most competitive and elegant solutions**
- make **your market more profitable.**

Are you ready to work with us?

SOME REFERENCES

Hotel, resorts, student residences but also B&Bs, hostels and nursing homes!



Emerald Hotel (5 stars) / Kosova



Buddah-Bar Hotel (5 stars) / Hungary



San Ramon (4 stars) / Spain



Micra Anglia (5 stars) / Greece



Thraki Palace (5 stars) / Greece



Hotel Continental (4 stars) / Ukraine

SOME REFERENCES IN ITALY



Chateau Monfort (5 stars) / Milano



Aqualux Hotel (4+ stars) / Verona



Rose Garden Palace (4 stars) / Roma



L'Hotel (3 stars) / Rimini (RN)



Atlantic Hotel (3 stars) / Gabicce (PU)



European Training Center / Varese

CONTACTS



GFP Lab S.r.L.

via Casalecchio 5
47924 Rimini (RN)
Italy

Tel.: +39 0541 1796200

Fax: +39 0541 1796120

www.gfplab.com

info@gfplab.com

follow us on



archilovers[®]
the architecture professional network